



## **Creation 55 & 70 Looseley**

The Reference  
in Tiles & Planks

**Gerflor**<sup>®</sup>

# Structure your spaces, create harmony

# Structurez les espaces, créez l'harmonie



Chips Green / Tamo Light / Marble Dark

### Class 33 Usage U3

Format (mm)	m <sup>2</sup> /box	m <sup>2</sup> /pallet
Creation 55 Looselay		
152 x 914	1.67	110.22
229 x 1220	1.67	113.56
600 x 600	2.16	84.04
914 x 914	3.34	116.9
Creation 55 Looselay Acoustic		
229 x 1220	2.23	124.88
600 x 600	2.16	103.68

### Class 34 Usage U4

Format (mm)	m <sup>2</sup> /box	m <sup>2</sup> /pallet
Creation 70 Looselay		
152 x 914	1.67	100.2
229 x 1220	1.67	100.2
235 x 1505	1.41	95.88
600 x 600	1.44	83.52
914 x 914	3.34	100.2

#### SAMPLES ÉCHANTILLONS



#### INTERIOR DESIGNER



## Creation Looselay

**52** designs  
décors

**6** sizes  
formats

**100%** design harmony  
coordonnable

Discover the quality and expertise of Gerflor in this collection designed to perfectly combine colours, patterns and formats.

Retrouvez la qualité et l'expertise Gerflor dans cette collection pensée pour associer coloris, décors et formats à la perfection.

#### The most comprehensive Looselay range

L'offre Looselay la plus complète

Creation 55 Looselay  
Creation 55 Looselay Acoustic  
Creation 70 Looselay  
Creation Saga<sup>2</sup>

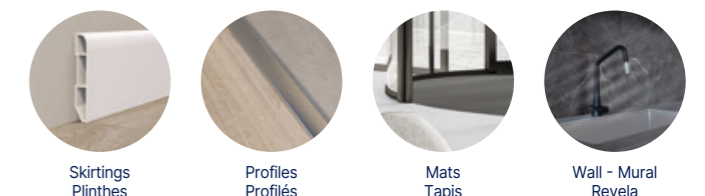
#### Multi-formats



#### A dedicated collection for hospitality, offices, commercial areas, and retail stores

Une collection pensée pour chaque espace dans l'hôtellerie, les bureaux, le tertiaire et les boutiques

#### Full design concept Solution complète



#### EASY TO MATCH WITH GERFLOR CARPET COLLECTIONS

COORDONNABLE AVEC LES COLLECTIONS  
MOQUETTES GERFLOR



1. 1566 Urban Street Terra  
2. 1574 Chips Terra  
3. 1565 Urban Street Cream



1. 1571 Marble Green  
2. 1580 Namou Dark Honey  
3. 1573 Chips Green

**Class 33  
Usage U3**

Format (mm)	m <sup>2</sup> /box	m <sup>2</sup> /pallet
Creation 55 Looselay		
152 x 914	1,67	110,22
229 x 1220	1,67	113,56
600 x 600	2,16	84,04
914 x 914	3,34	116,9
Creation 55 Looselay Acoustic		
229 x 1220	2,23	124,88
600 x 600	2,16	103,68

**Class 34  
Usage U4**

Format (mm)	m <sup>2</sup> /box	m <sup>2</sup> /pallet
Creation 70 Looselay		
152 x 914	1,67	100,2
229 x 1220	1,67	100,2
229 x 1505	1,41	95,88
600 x 600	1,44	83,52
914 x 914	3,34	100,2

SAMPLES  
ÉCHANTILLONS



INTERIOR  
DESIGNER



1. 0085 Dock Grey  
2. 1559 Tamo Light  
3. 1570 Marble Dark



1. 1561 Tamo Natural  
2. 1567 Tamo Clear  
3. 1569 Marble Clear

# Sustainability & comfort in one product!

Une dalle confort et respectueuse de l'environnement !



**100% recyclable through Gerflor's Second Life Program**  
Up to 35% recycled content

100 % recyclable via le Programme Seconde Vie  
Jusqu'à 35 % de contenu recyclé



**Great indoor air quality**  
TVOC emissions  
<10 micrograms/m<sup>3</sup> after 28 days

Excellente qualité de l'air intérieur  
Émissions TCOV  
< 10 micrograms/m<sup>3</sup> après 28 jours



**Reach compliant**

Conforme Reach



**Carbon footprint**  
EPD available

Impact carbone  
FDES disponibles



**Adhesive Free Installation**  
Up to 30 sqm

Pose sans colle  
jusqu'à 30 m<sup>2</sup>



**Easy to remove**  
**Easy to re-use**

Facile à déposer  
Facile à réutiliser



1575 Stony Cream / 1565 Urban Street Cream

# Why Looselay?

Pourquoi choisir une pose plombante ?

## The fastest to install!

La plus rapide à installer !



**No adhesive, no clic**  
Sans colle, sans clic



**No down time - Direct use after installation**  
Mise en service immédiate  
Pas de fermeture



**Easy herringbone installation**  
Installation facile en chevrons



**Square format**  
**Easy mix & match**  
Format carré  
Mix & match facile



**Reinforced structure with fiber glass veil**  
Structure renforcée par voile de verre



**Easy replacement**  
Remplacement facile

For more information, please refer to Gerflor installation guidelines.  
Pour plus d'informations se référer au Principe de Mise en Œuvre Gerflor.

## All the benefits of Looselay engineered by Gerflor

Tous les bénéfices d'une dalle plombante conçue par Gerflor



**Renovation on ceramic**  
Pose directe sur carrelage



**Compatible with raised access floors**  
Compatible plancher technique



**Acoustic comfort (walking noise < 73 dB)**  
Confort acoustique dans la pièce (sonorité à la marche < 73 dB)

## Designed by Gerflor

Conçu par Gerflor



**High definition design**  
Design haute définition



**Ultra realistic surface**  
Surface ultra réaliste

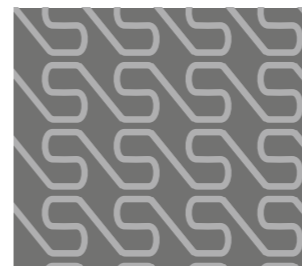


**4 bevelled edges**  
4 chanfreins



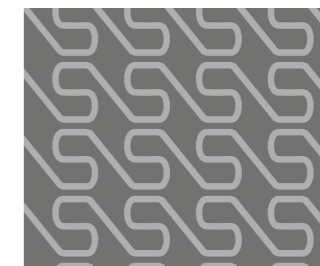
**52 designs to be mixed**  
52 décors à associer

## Creation 55/70 Looselay



**Anti-slip backing**  
Envers anti-dérapant

## Creation 55 Looselay Acoustic



**-19 dB**

# Creation 55 Looselay & Looselay Acoustic



0455 Long Board

LL AC: 229x1220 mm  
229x1220 mm



0504 Twist

229x1220 mm



1559 Tamo Light

LL AC: 229x1220 mm  
229x1220 mm



1561 Tamo Natural

LL AC: 229x1220 mm  
229x1220 mm



0456 Ranch

LL AC: 229x1220 mm  
229x1220 mm



0441 Honey Oak

229x1220 mm



1567 Tamo Clear

229x1220 mm



0796 Swiss Oak Golden

229x1220 mm



0347 Ballerina

LL AC: 229x1220 mm  
229x1220 mm



1560 Tamo Dainty

LL AC: 229x1220 mm  
229x1220 mm



1568 Tamo Light Brown

229x1220 mm

# Creation 55 Looselay & Looselay Acoustic



1564 Gentleman Terra

600x600 mm



1563 Gentleman Cream

600x600 mm



1566 Urban Street Terra

600x600 mm

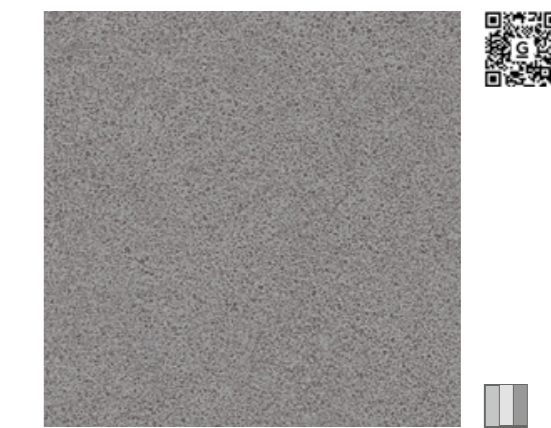


1565 Urban Street Cream

600x600 mm



1566 Urban Street Terra / 1564 Gentleman Terra



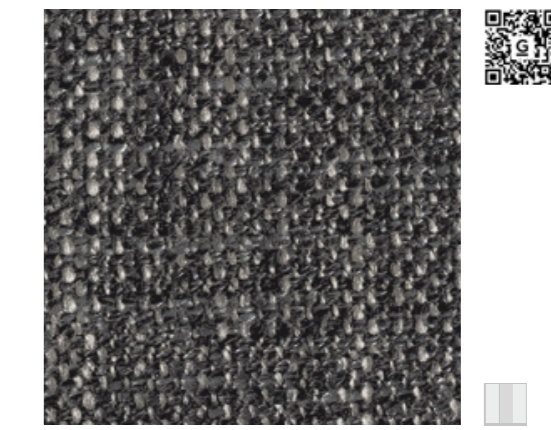
1284 Urban Street Medium

914x914 mm  
LL AC: 600x600 mm



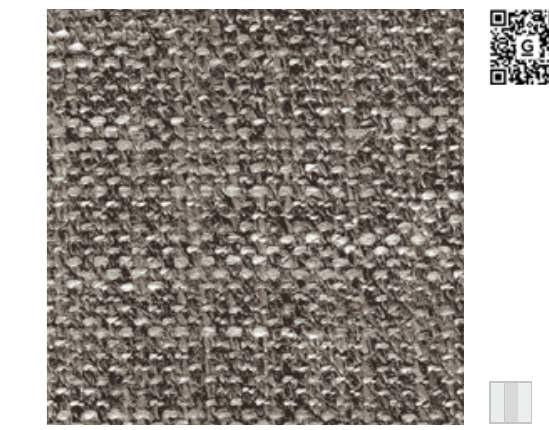
1283 Urban Street Light

914x914 mm  
LL AC: 600x600 mm



1058 Gentleman Grey

600x600 mm



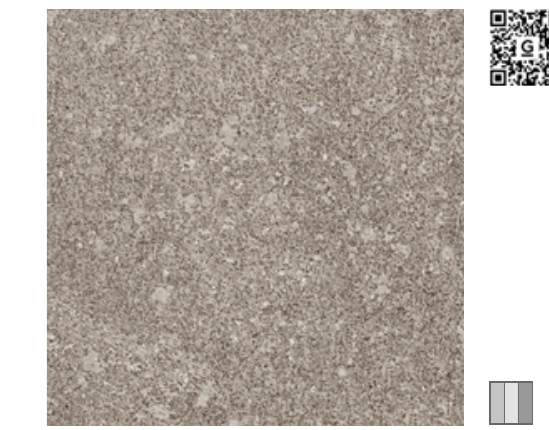
1083 Gentleman Taupe

600x600 mm



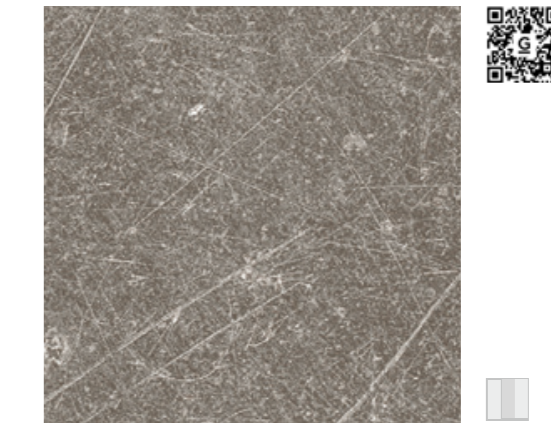
0374 Parker Station

914x914 mm



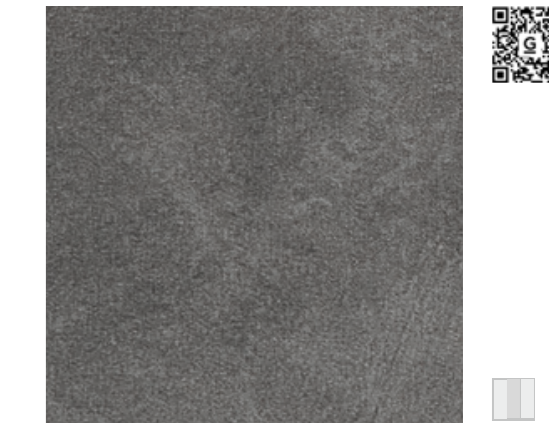
0868 Bloom Uni Taupe

600x600 mm



0087 Dock Taupe

914x914 mm



0436 Riverside

600x600 mm

**XL** | Planks  
Lames



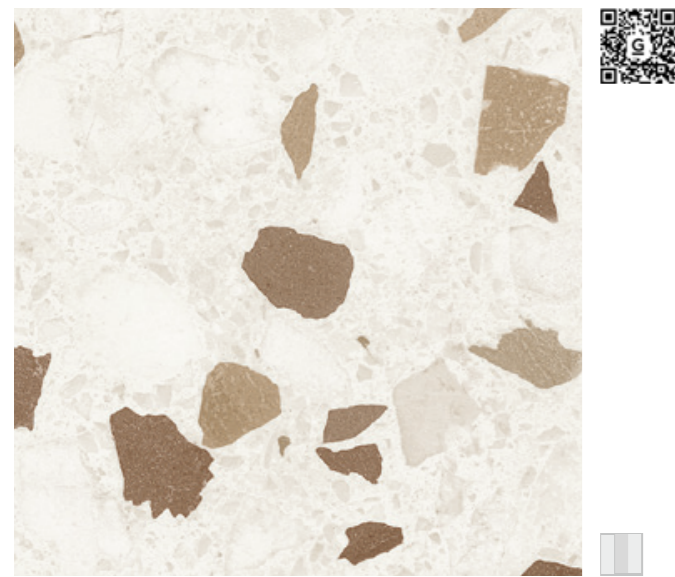
1578 Namou Light Honey 235x1505 mm



1579 Namou Honey 235x1505 mm



1580 Namou Dark Honey 235x1505 mm



1574 Chips Terra 600x600 mm



1566 Urban Street Terra 600x600 mm

Design shade variation:  Light  Medium

# Creation 70 Looseley



1560 Tamo Dainty 229x1220 mm



1567 Tamo Clear 229x1220 mm



1561 Tamo Natural 229x1220 mm



1568 Tamo Light Brown 229x1220 mm



1561 Tamo Natural



0455 Long Board 229x1220 mm



0504 Twist 229x1220 mm



1559 Tamo Light 229x1220 mm



0060 Arena 229x1220 mm



0456 Ranch 229x1220 mm

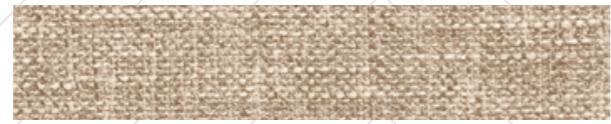
Design shade variation:  Light  Medium

# Creation 55 Looselay

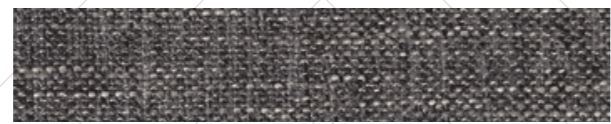
Herringbone Chevron 152x914 mm



Tamo Light



1563 Gentleman Cream



1058 Gentleman Grey



1559 Tamo Light



1567 Tamo Clear

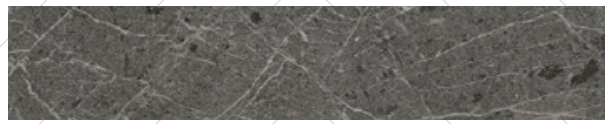


1568 Tamo Light Brown

# Creation 70 Looselay



1569 Marble Clear



1570 Marble Dark



1559 Tamo Light



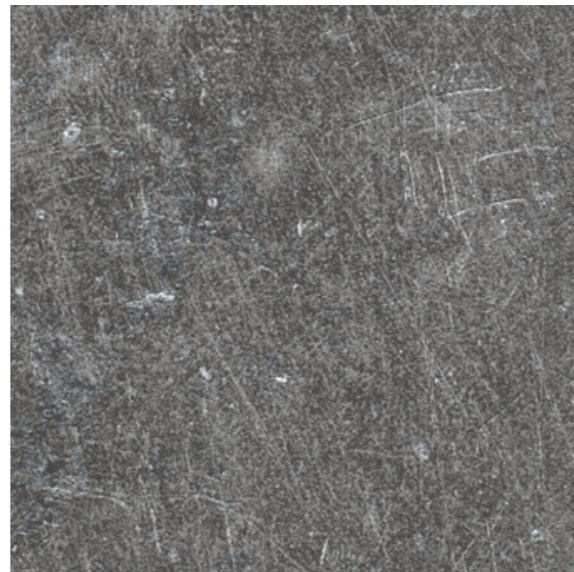
1567 Tamo Clear



1568 Tamo Light Brown



Marble Clear / Marble Dark



0085 Dock Grey

914x914 mm



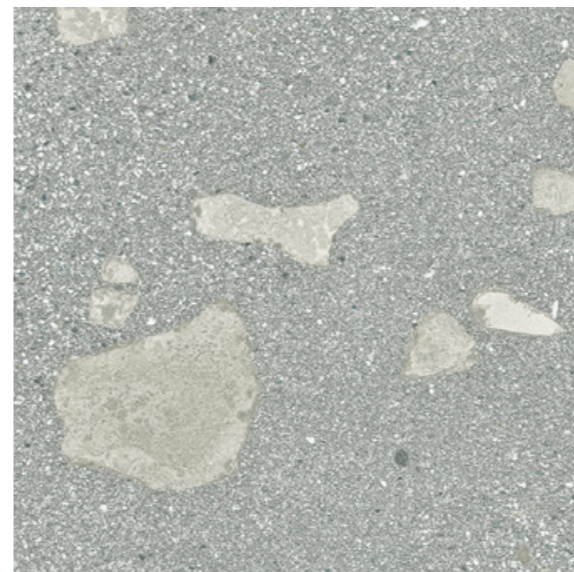
1284 Urban Street Medium

914x914 mm



1575 Stony Cream

600x600 mm



1576 Stony Medium

600x600 mm



1283 Urban Street Light

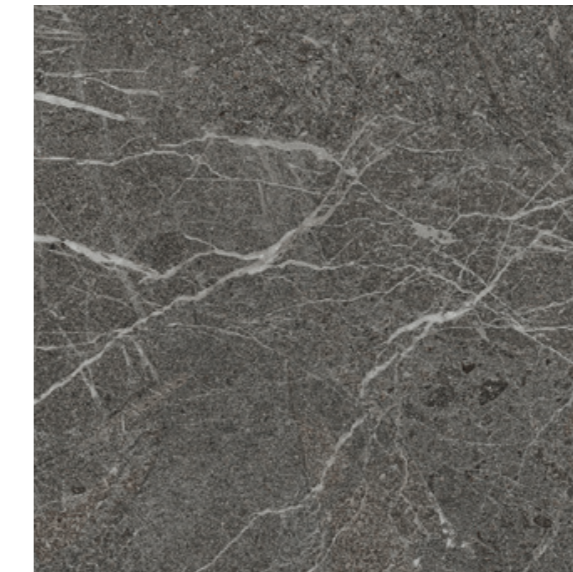
914x914 mm



1569 Marble Clear

914x914 mm

# Creation 70 Looselay



1570 Marble Dark

914x914 mm



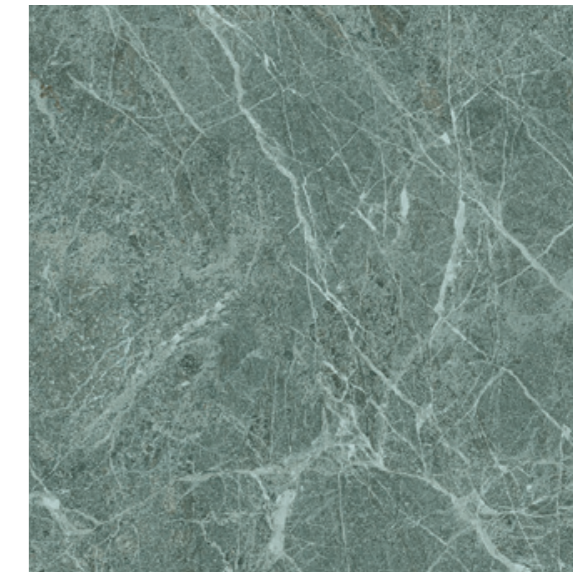
1577 Urban Street Dark

914x914 mm



1573 Chips Green

600x600 mm



1571 Marble Green

914x914 mm



1565 Urban Street Cream

600x600 mm



1572 Chips Blue

600x600 mm

# Creation 55 & 70 Looselay

gerflor.com / follow us



Z0014539



\* information sur le niveau d'émission de substances volatiles dans l'air intérieur, présentant un risque de toxicité par inhalation, sur une échelle de classe allant de A+ (très faibles émissions) à C (fortes émissions).

## Description / Beschreibung / Beschrijving / Descripción / Descrição / Descrizione

	Creation 70 Looselay	Creation 55 Looselay	Creation 55 Looselay Acoustic		
Épaisseur totale / Total Thickness / Gesamtdicke / Totale dikte / Espesor total / Essessura total / Spessore totale	EN ISO24346	5.00	4.50	5.50	
Épaisseur couche d'usure / Thickness of the wearlayer / Dicke der Nuttschicht / Dikte van de slijflaag / Espesor capa de uso / Essessura camada de desgaste / Spessore strato di usura	EN ISO24340	0.70	0.55	0.55	
Poids / Weight / Flächengewicht / Gewicht / Peso / Peso / Peso	EN ISO 23997	8300	7500	7600	
Format / Size / Format / Afmetingen / Dimensiones / Dimensões / Dimensioe	EN ISO 24342	mm	235x1505 228.6x1220 152.4x914.4 600x600 914.4x914.4	228.6x1220 152.4x914.4 600x600 914.4x914.4	228.6x1220 600x600
Nombre de lames/dalles - m <sup>2</sup> par boîte / Number of planks & tiles - m <sup>2</sup> per box	-	-	4 / 1.41 m <sup>2</sup> 6 / 1.67 m <sup>2</sup> 12 / 1.67 m <sup>2</sup> 4 / 1.44 m <sup>2</sup> 4 / 3.34 m <sup>2</sup>	6 / 1.67 m <sup>2</sup> 12 / 1.67 m <sup>2</sup> 6 / 2.16 m <sup>2</sup> 4 / 3.34 m <sup>2</sup>	8 / 2.23 m <sup>2</sup> 6 / 2.16 m <sup>2</sup>

## Classification / Klassifikation / Classificatie / Clasificaciones / Classificações / Classificazioni

Norme/Spécification produit / Norm/Product Specification / Produktnorm / Technische eigenschappen / Normas / Normas / Norma prodotto	-	-	EN ISO 10582	EN ISO 10582	ISO 10582
Classement européen / European Classification / Europäische Klassifizierung / Europese classificatie / Classificação Europeia / Europea / Classificação Europeia / Europea	EN ISO 10874	class	34 - 43	33 - 42	33 - 42
Classement UPEC	-	-	Locaux classés U4P3E1/2C2	Locaux classés U3P3E1/2C2	-
Avis technique	-	n° AT	12/19-1786_V3	12/19-1786_V3	-
Classement Feu / Fire Rating / Brandverhalten / Brand classificatie / Fuego / Fogo / Reazione al fuoco	EN 13 501-1	class	Bfl-s1	Bfl-s1	Bfl-s1
Potentiel de charge / Static Electrical Propensity / Begehaufladung / Elektrische eigenschappen / Comportamiento electrostático / Comportamento electrostático / Resistenza elettrica	EN 1815	kV	< 2	< 2	< 2
Glissance humide / Slip Resistance Wet / Rutschhemmung / Anti-slip / Deslizamiento húmedo / Escorregamento húmido / Scivolosità umida <sup>(1)</sup>	DIN 51130	class	R10	R10	R10

## Performances / Technische eigenschappen / Testresultaat / Cualidades técnicas / Performances / Caratteristiche tecniche

Résistance à l'usure / Wear Resistance / Verschleißverhalten / Slijtvastheid / Abrasión / Abrasão / Resistenza all'abrasione	EN 660.2	mm <sup>3</sup>	≤ 2.0	≤ 2.0	≤ 2.0
Groupe d'abrasion / Wear Group / Verschleißgruppe / Groep slijtvastheid / Grupo de abrasión / Grupo de abrasão / Gruppo di abrasione	QB 30	-	T	T	T
Teneur en agent liant / Type Binder content / Bindemittelgehalt / Contenido en ligante / Conteúdo em ligante	EN ISO 10582	type	I	I	I
Stabilité dimensionnelle (norme) / Dimensional stability (norm) / Maßstabilität (Norm) / Maatvastheid (norm) / Estabilidad Dimensional (Exigencia) / Estabilidade dimensional (normalização) / Stabilità dimensionale (requisito normativo)	EN ISO 23999	%	≤ 0.15	≤ 0.15	≤ 0.15
Stabilité dimensionnelle (valeur moyenne mesurée) / Dimensional stability (average measured value) / Maßstabilität (Durchschnittswert) / Maatvastheid (gemeten gemiddelde waarde) / Estabilidad Dimensional (Valor medido) / Estabilidade Dimensional (Valor medio) / Stabilità dimensionale (rievata)	-	%	≈ 0.05	≈ 0.05	≈ 0.05
Poinçonnement statique rémanent / Residual Indentation / Resteindruck / Indrukbelasting / Punzonamiento / Punçoamento / Impronta	EN ISO 24343-1	mm	≤ 0.10	≤ 0.10	≤ 0.10
Isolation acoustique bruits de chocs / Impact sound insulation / Trittschallverbesserungsmaß / Geluidsisolatie / Acústica / Isolamento acústico	EN ISO 717-2	dB	7	7	19
Sonorité à la marche / Room Impact / Raumschall / Loopgeluid / Rumore al calpestio / Sonoridad en la pisada / Sonoridade ao andar	NF S 31074	dB	74	74	70
Essai de la chaise à roulettes / Castor chair test / Stuhlrollenbeanspruchung / Rolweerstand bureaustoelen / Determinación del efecto de una silla con ruedas / Resistência a cadeiras de rodas / Resistenza al passaggio di sed (Type W)	ISO 4918	-	OK	OK	OK
Conductivité thermique / Thermal Conductivity / Wärmeleitfähigkeit / Thermische weerstand / Conductividad térmica / Contutividade térmica / Resistenza termica / Värmeledningsmotsstånd / Varmemostand	EN ISO 10456	W/(m.K)	0.25	0.25	0.25
Solidité lumière / Colour Fastness / Lichtechtheid / Resistencia a la luz / Estabilidade das cores / Solidità alla luce	EN 20 105 - B02	degree	≥ 6	≥ 6	≥ 6
Traitement de surface / Surface Treatment / Oberflächenvergütung / Oppervlaktebehandling / Tratamiento de superficie / Tratamento de superficie / Trattamento di superficie	-	-	ProtecShield™	ProtecShield™	ProtecShield™
Résistance aux produits chimiques / Chemical Products Resistance / Verhalten gegenüber Chemikalien / Chemische bestandigheid / Resistencia a los productos químicos / Resistência aos produtos químicos / Resistenza ai prodotti chimici <sup>(2)</sup>	EN ISO 26987	-	OK	OK	OK

## Environnement / Environment / Umwelt / Medio ambiente / Meio ambiente

Contenu recyclé / Recycled content	-	%		jusqu'à 35% / up to 35%	
Recyclabilité (Programme seconde vie Gerflor) / Recyclability (Through Gerflor second life program)	-	%	100	100	100
FDES / EPD	-	-		Disponible / Available	

## Santé / Health / Gesundheit / Salud / Saúde / Salute

TCOV après 28 jours / TVOC after 28 days / TVOC (28 Tage) / TVOC (28 dagen) / TVOC (28 días) / TVOC (28 dias) / TVOC (28 giorni) / TVOC (28 dagar) / TVOC (28 dager)	ISO 16000-6	micrograms / m <sup>3</sup>	< 10	< 10	< 10
--	-------------	-----------------------------	------	------	------

## Marquage CE / CE Marking / CE Kennzeichnung / Eg\_conformiteitsmerk / Marca De Conformidad CE / Marca DE Conformidade CE / Marcatura CE Di Conformita



EN 14041



(1) Plan incliné avec huile / Ramp test with oil / Schiefe Ebene  
(2) Beständig gegenüber nicht färbenden alkoholhaltigen Handdesinfektionsmitteln, Haushaltschemikalien und verdünnten Säuren und Laugen bei kurzzeitiger Einwirkung.

IMPORTANT : Les informations contenues dans ce document sont valables à compter du : 01/04/2026 et susceptibles d'être modifiées à tout moment et sans préavis. L'évolution de la technique étant permanente, il appartient à notre clientèle avant toute mise en œuvre, de vérifier auprès de nos services que le présent document est bien celui en vigueur.

IMPORTANT: The information contained in this document is valid from 01/04/2026 and is subject to change at any time without notice. In the context of constantly changing technology, our customers are responsible, prior to any use, for checking with us that this document is the version in force.

## we care / we act our commitments for 2030

<p><b>climate</b></p> <p><b>-30% CO<sub>2</sub></b> scopes 1, 2, 3 in tons eq. CO<sub>2</sub>, vs 2019 Science Based Targets<sup>(1)</sup></p>	<p><b>resources</b></p> <p><b>75%</b> biobased, mineral and recycled content<sup>(2)</sup></p> <p><b>30%</b> recycled content<sup>(3)</sup></p>	<p><b>circularity</b></p> <p><b>65 000 tons</b> annual volume recycled<sup>(4)</sup></p> <p><b>45%</b> looselay<sup>(5)</sup></p>	<p><b>health &amp; well-being</b></p> <p><b>100%</b> products better than Indoor Air Quality standards<sup>(6)</sup></p> <p><b>95%</b> sales covered by EPD<sup>(7)</sup></p>	<p><b>people</b></p> <p><b>30%</b> women<sup>(8)</sup></p> <p><b>40%</b> internal mobility<sup>(9)</sup></p> <p><b>Towards 0</b> accident<sup>(10)</sup></p>
--	---	---	---	--

More details: 1. Scopes 1, 2 & 3, in absolute value, market-based. Trajectory approved by SBTi (Science Based Targets Initiative). 2. Origin of raw materials for the entire Floor & Wall portfolio, on average, by weight; including 15% virgin salt, a primary element in vinyl manufacturing. Compared to 71% in 2024. 3. Average content in the Floor & Wall vinyl portfolio, by weight. Compared to 21% in 2024. 4. Recycled in our factories and recycling units. Compared to 59 040 tons in 2024. 5. % of Floor activity with non-glued products, easy to remove, easy to re-use. Compared to 40% in 2024. 6. 100% of vinyl and linoleum sold to the building market below 100 micrograms/m<sup>3</sup> (TVOC 28 days). 7. % of Floor & Wall activity covered by Environmental Product Declarations (EPD). Compared to 44% in 2024. 8. % women in our global workforce and among our managers. Compared to respectively 26% and 27% in 2024. 9. % job openings filled with internal hires worldwide. Compared to 25% in 2024. 10. Towards 0 accident: Lost time accident per million hours worked: below 3 vs 8,9 in 2024, for Gerflor employees worldwide.